



Key features

- ◆ Transparent front cover offers greater freedom for scale markings
- ◆ Taut band movements

Clarity

Meter types 22A, 23A, 32A, 42A

The Clarity analogue moving coil range of four instruments provides a contemporary styled yet cost effective quality solution for various meter applications.

Features and benefits

- ◆ Contemporary styled with a completely transparent acrylic front cover providing greater freedom for scale markings.
- ◆ Mask for lower area available in grey or black as standard – other colours to complement panel decor and printing also available to special order.
- ◆ Strong rear body case moulding manufactured from thermosetting plastic.
- ◆ Taut band movements incorporated as standard.

Pointers and dials

Pointers and dial markings are normally in accordance with the current BS 3693 requirements. Other types of pointer and/or markings together with company logos, including colour printing can be provided to suit individual requirements. Centre or right-hand zero scales are available if required. Mirror dials can be supplied.

Accuracy

All SIFAM meters are normally supplied to meet the requirements of current BS 89, IEC 51, EN60 051 and ANSI C39.1 standards.

Zero adjuster

Normally positioned on the front but can be offered on the rear.

Certified drawings

Available on request.

Operating temperature range

-25°C to +55°C.

PPM Indicators and vu Meters

All the clarity meters are available to the relevant specifications. Please refer to SIFAM for specific information.

Temperature Indicators

The complete range of Clarity meters is suitable for use with thermocouples. Please refer to SIFAM for specific information.

Illumination

This can be provided from the front when required. Please refer to SIFAM for specific information.

Ordering information

To order, simply refer to the SIFAM Meter user guide or contact the sales office.



Key features

- ◆ Traditional construction
- ◆ Clean, functional design
- ◆ Taut band movements (except type 14)
- ◆ Suitable for a wide range of applications and industries

Director

Meter types 14, 24A, 34A, 44A, 64A

The Director range of analogue moving coil instruments is robust yet attractively styled, and is available in five fascia sizes.

Features and benefits

- ◆ A traditionally styled range of robust meters ideally suited for a wide range of applications and industries.
- ◆ Front panel mounting, fitted with matt black moulded front with glass window.
- ◆ Modern, clean, uncluttered appearance.
- ◆ Strong rear body case moulding manufactured from glass filled nylon. (Except type 64A which is thermosetting plastic).
- ◆ Taut band movements incorporated as standard – except type 14.
- ◆ Where space is a premium the type 14 meter with its jewel and pivot movement provides the optimum solution without compromising reliability.

Pointers and dials

Pointers and dial markings are normally in accordance with the current BS 3693 requirements. Other types of pointer and/or custom dial markings together with company logos, including colour printing can be provided to suit individual requirements. Centre or righthand zero scales are available if required. Mirror dials can be supplied (except type 14).

Accuracy

All SIFAM meters are normally supplied to meet the requirements of current BS 89, IEC51, EN60 051 and ANSI C39.1 standards.

Zero adjuster

Normally positioned on the front but can be offered on the rear.

Certified drawings

Available on request.

Operation temperature range

-40°C to +70°C.

PPM Indicators and vu Meters

All the Director meters are available to the relevant specifications (except type 64A). Please refer to SIFAM for specific information.

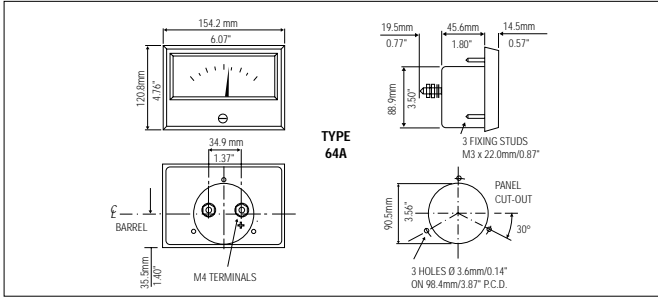
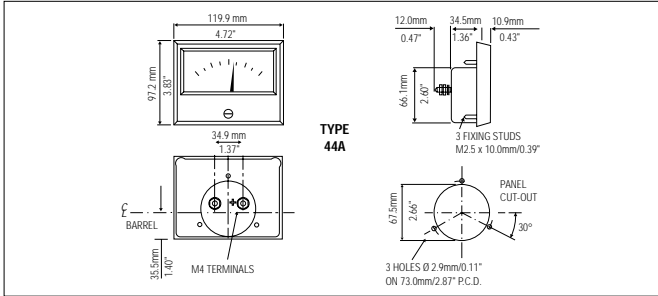
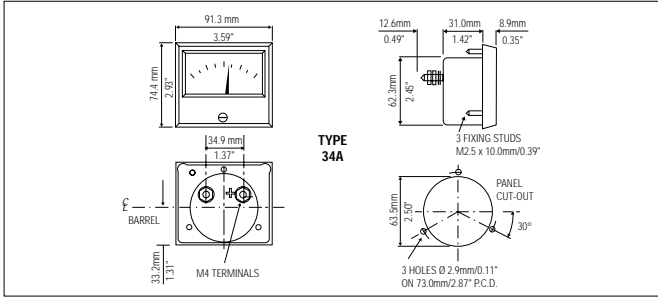
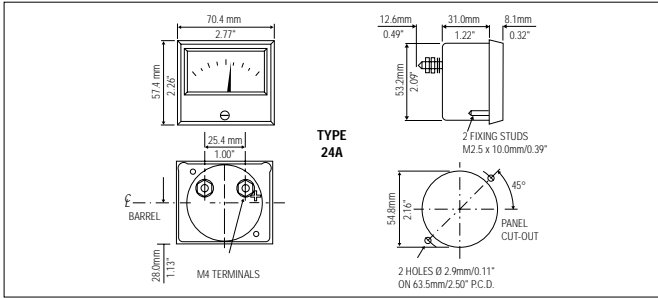
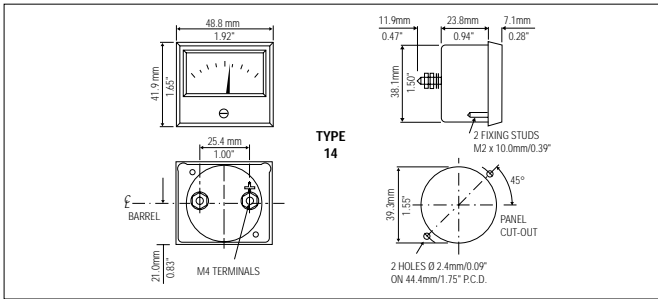
Temperature Indicators

The complete range of Director meters is suitable for use with thermocouples. Please refer to SIFAM for specific information.

Ordering information

To order, simply refer to the SIFAM Meter user guide or contact the sales office.

Director



Standard ranges

If the required range is not indicated by a symbol please enquire as it may be possible to supply to your special requirements

Range	DC				AC				H.F. Thermocouple	
	V	μ A	mA	A	V	μ A	mA	A	mA	A
0-1	●*		●	●	●			■		●+
0-1.5										
0-2	●				●					●+
0-2.5										●+
0-3	●		●	●	●					●+
0-5	●		●	●	●		●	■	●+	●+
0-10	●	●+	●	●	●		●	■	●+	●+
0-12										●+
0-15			●	●						●+
0-20	●	●+	●	●	●		●	■		●+
0-25		●		◆						●+
0-30	●		●	◆	●		●	■		
0-40	●		●	◆	●		●			
0-50	●	●	●	◆	●	●		■	●+	
0-100	●	●	●	▲	●	●	●	■	●+	
0-120	●		●		●					
0-150	●		●		●			■		
0-200	●	●	●	▲	●		■		●+	
0-250	●	●	●		●	●				
0-300	●			▲	●					
0-400	●+		●		●+					
0-500	●+	●	●	▲	●+	●	■		●+	
0-1000	✓			▲	✓					
0-1500	✓			▲	✓					
0-2000	✓			▲						

- Self contained.
- ◆ Complete with attached shunt*
- ▲ 75mV – external shunt required.
- ✓ Complete with external resistance box.
- * Millivoltmeters can be supplied on request.
- Complete with external transformer.
- + Not type 14.

Terminal resistance – Tolerance $\pm 15\%$

Range	All (except type 64A)	Type 64A
25 μ A	4200 Ω	4800 Ω
50 μ A	2040 Ω	1700 Ω
100 μ A	1020 Ω	720 Ω
200 μ A	490 Ω	230 Ω
250 μ A	360 Ω	184 Ω
500 μ A	207 Ω	36 Ω
1mA	68 Ω	11 Ω

Accuracy

Type	Scale length	DC	AC Rectifier
14	34.0mm/1.34in	$\pm 2.5\%$	$\pm 2.5\%$
24A	50.0mm/1.97in	$\pm 1.5\%$	$\pm 2.5\%$
34A	70.0mm/2.76in	$\pm 1.5\%$	$\pm 2.5\%$
44A	95.0mm/3.74in	$\pm 1.0\%$	$\pm 1.5\%$
64A	127.0mm/5.00in	$\pm 1.0\%$	$\pm 1.5\%$

Weight

Type	Nett Weight	Type	Nett Weight
14	57g/2.0oz	44A	255g/9.0oz
24A	142g/5.0oz	64A	710g/25.0oz
34A	156g/5.5oz		



SIFAM INSTRUMENTS LIMITED
 WOODLAND ROAD TORQUAY DEVON TQ2 7AY ENGLAND
 TEL: 01803 407733 FAX: 01803 407740
 info@sifam.com www.sifam.com



As part of our policy of continuous product improvement we reserve the right to change specifications at any time.



Key features

- ◆ Traditional construction
- ◆ Clean, functional design
- ◆ Taut band movements (except type 14)
- ◆ Suitable for a wide range of applications and industries

Director

Meter types 14, 24A, 34A, 44A, 64A

The Director range of analogue moving coil instruments is robust yet attractively styled, and is available in five fascia sizes.

Features and benefits

- ◆ A traditionally styled range of robust meters ideally suited for a wide range of applications and industries.
- ◆ Front panel mounting, fitted with matt black moulded front with glass window.
- ◆ Modern, clean, uncluttered appearance.
- ◆ Strong rear body case moulding manufactured from glass filled nylon. (Except type 64A which is thermosetting plastic).
- ◆ Taut band movements incorporated as standard – except type 14.
- ◆ Where space is a premium the type 14 meter with its jewel and pivot movement provides the optimum solution without compromising reliability.

Pointers and dials

Pointers and dial markings are normally in accordance with the current BS 3693 requirements. Other types of pointer and/or custom dial markings together with company logos, including colour printing can be provided to suit individual requirements. Centre or righthand zero scales are available if required. Mirror dials can be supplied (except type 14).

Accuracy

All SIFAM meters are normally supplied to meet the requirements of current BS 89, IEC51, EN60 051 and ANSI C39.1 standards.

Zero adjuster

Normally positioned on the front but can be offered on the rear.

Certified drawings

Available on request.

Operation temperature range

-40°C to +70°C.

PPM Indicators and vu Meters

All the Director meters are available to the relevant specifications (except type 64A). Please refer to SIFAM for specific information.

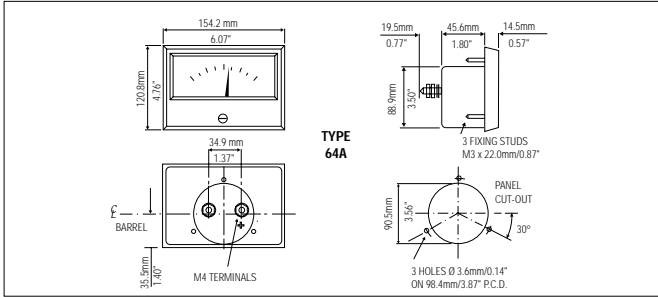
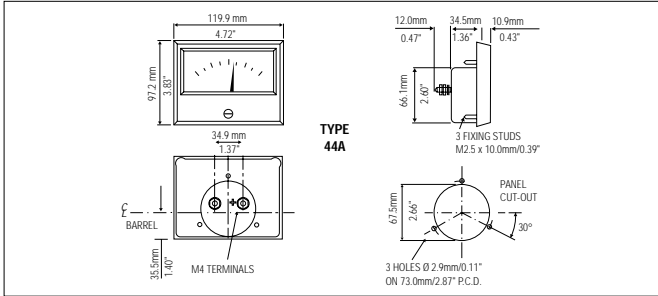
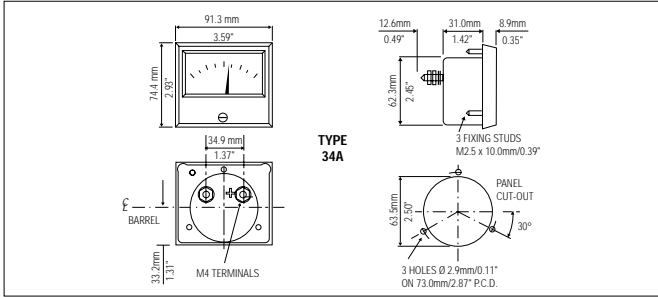
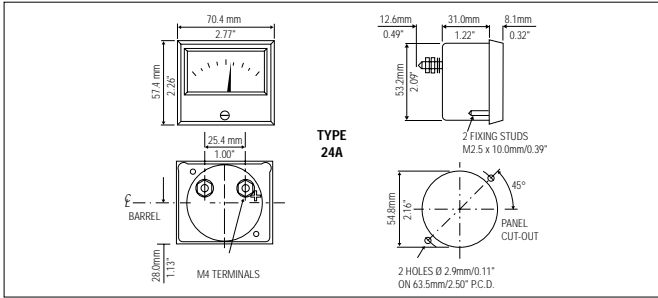
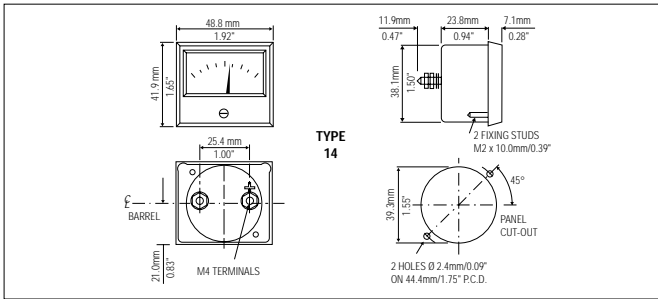
Temperature Indicators

The complete range of Director meters is suitable for use with thermocouples. Please refer to SIFAM for specific information.

Ordering information

To order, simply refer to the SIFAM Meter user guide or contact the sales office.

Director



Standard ranges

If the required range is not indicated by a symbol please enquire as it may be possible to supply to your special requirements

Range	DC				AC				H.F. Thermocouple	
	V	µA	mA	A	V	µA	mA	A	mA	A
0-1	●*		●	●	●			■		●+
0-1.5										
0-2	●				●				●+	
0-2.5									●+	
0-3	●		●	●	●					●+
0-5	●		●	●	●		●	■	●+	●+
0-10	●	●+	●	●	●		●	■	●+	●+
0-12										●+
0-15			●	●					●+	●+
0-20	●	●+	●	●	●		●	■		
0-25		●		◆					●+	
0-30	●		●	◆	●		●	■		
0-40	●		●	◆	●		●			
0-50	●	●	●	◆	●	●		■	●+	
0-100	●	●	●	▲	●	●	●	■	●+	
0-120	●		●		●					
0-150	●		●		●			■		
0-200	●	●	●	▲	●		■		●+	
0-250	●	●	●		●	●				
0-300	●			▲	●					
0-400	●+		●		●+					
0-500	●+	●	●	▲	●+	●	■		●+	
0-1000	✓			▲	✓					
0-1500	✓			▲	✓					
0-2000	✓			▲						

- Self contained.
- ◆ Complete with attached shunt*
- ▲ 75mV – external shunt required.
- ✓ Complete with external resistance box.
- * Millivoltmeters can be supplied on request.
- Complete with external transformer.
- + Not type 14.

Terminal resistance – Tolerance ± 15%

Range	All (except type 64A)	Type 64A
25µA	4200Ω	4800Ω
50µA	2040Ω	1700Ω
100µA	1020Ω	720Ω
200µA	490Ω	230Ω
250µA	360Ω	184Ω
500µA	207Ω	36Ω
1mA	68Ω	11Ω

Accuracy

Type	Scale length	DC	AC Rectifier
14	34.0mm/1.34in	±2.5%	±2.5%
24A	50.0mm/1.97in	±1.5%	±2.5%
34A	70.0mm/2.76in	±1.5%	±2.5%
44A	95.0mm/3.74in	±1.0%	±1.5%
64A	127.0mm/5.00in	±1.0%	±1.5%

Weight

Type	Nett Weight	Type	Nett Weight
14	57g/2.0oz	44A	255g/9.0oz
24A	142g/5.0oz	64A	710g/25.0oz
34A	156g/5.5oz		



SIFAM INSTRUMENTS LIMITED
 WOODLAND ROAD TORQUAY DEVON TQ2 7AY ENGLAND
 TEL: 01803 407733 FAX: 01803 407740
 info@sifam.com www.sifam.com



As part of our policy of continuous product improvement we reserve the right to change specifications at any time.

Key features

- ◆ Back of panel mounting
- ◆ Clean, clear design
- ◆ Strong die-cast bezel
- ◆ Fixing points allow for close lateral positioning of more than one instrument
- ◆ Taut band movements



Meter as seen when mounted

Clarity Focus

Meter types 22AF, 32AF, 42AF

The clarity Focus analogue moving coil range of three back of panel mounting instruments is uniquely styled to allow maximum use of front panel space.

Features and benefits

- ◆ Contemporary styled with a transparent acrylic front and accompanying die-cast black alloy bezel enabling the panel to be sandwiched between the meter and bezel by two screw fixing clamps. Maximum panel thickness 4mm.
- ◆ The fixing points are offset to allow close lateral positioning of more than one instrument.
- ◆ A rear access zero adjuster is fitted as standard alleviating the need for a panel access hole. A zero adjuster can be fitted on the front if required.
- ◆ Only the meter dial is visible, providing cleaner lines and more panel space.
- ◆ Strong rear body case moulding manufactured from thermosetting plastic.
- ◆ Taut band movements incorporated as standard.

Pointers and dials

Pointers and dial markings are normally in accordance with the current BS3693. Other types of pointer and/or custom dial markings together with company logos, including colour printing, can be provided to suit individual requirements. Centre or right-hand zero scales are available if required. Mirror dials can be supplied.

Accuracy

All SIFAM meters are normally supplied to meet the requirements of current BS 89, IEC 51, EN60 051 and ANSI C39.1 standards.

Certified drawings

Available on request.

Operating temperature range

-25°C to +55°C

PPM Indicators and vu Meters

All the Clarity Focus meters are available to the relevant specifications. Please refer to SIFAM for specific information.

Temperature Indicators

The complete range of Clarity Focus meters is suitable for use with thermocouples. Please refer to SIFAM for specific information.

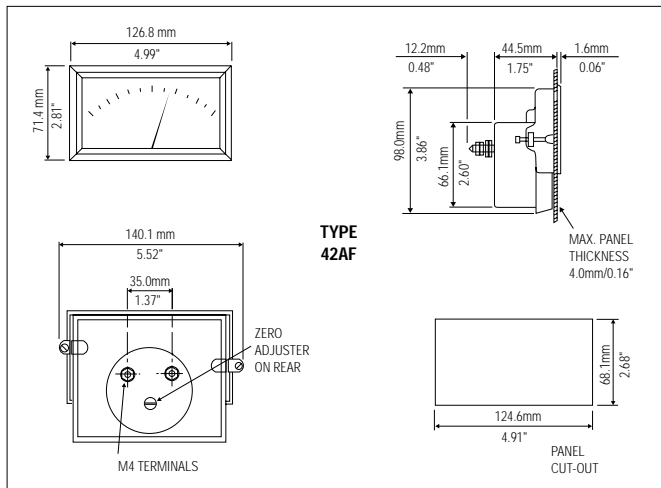
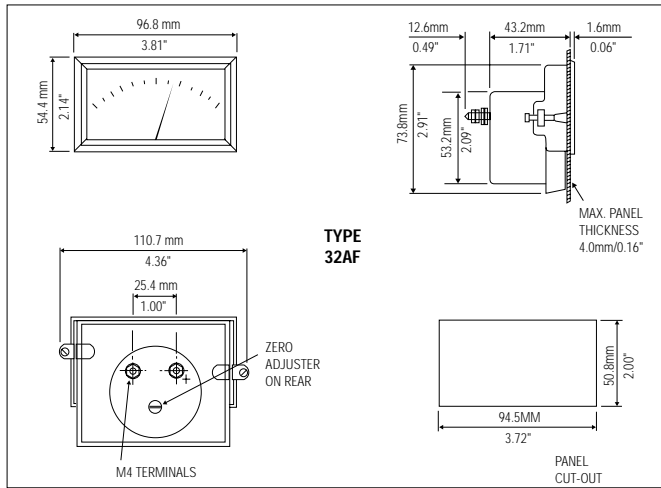
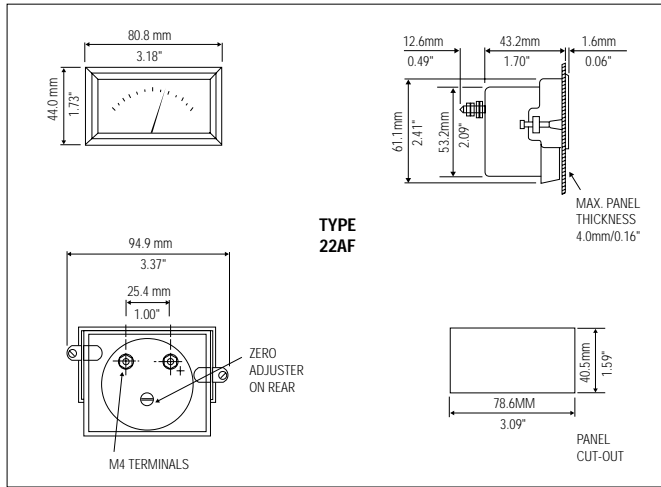
Illumination

This can be provided from behind the panel when required. Please refer to SIFAM for specific information.

Ordering information

To order, simply refer to the SIFAM Meter user guide or contact the sales office.

Clarity Focus



Standard ranges

If the required range is not indicated by a symbol please enquire as it may be possible to supply to your special requirements

Range	DC				AC				F.F. Thermocouple	
	V	µA	mA	A	V	µA	mA	A	mA	A
0-1	●*		●	●	●		●	■		●
0-1.5										
0-2	●				●					●
0-2.5										●
0-3	●		●	●	●					●
0-5	●		●	●	●		●	■	●	●
0-10	●	●	●	●	●		●	■	●	●
0-12										●
0-15			●	●						●
0-20	●	●	●	●	●		●	■		●
0-25		●		◆						●
0-30	●		●	◆	●		●	■		
0-40	●		●	◆	●		●			
0-50	●	●	●	◆	●	●		■	●	
0-100	●	●	●	▲	●	●	●	■	●	
0-120	●		●		●					
0-150	●		●		●			■		
0-200	●	●	●	▲	●		■		●	
0-250	●	●	●		●	●				
0-300	●		●	▲	●					
0-400	●		●	▲	●					
0-500	●	●	●	▲	●	●	■		●	
0-1000	✓			▲	✓					
0-1500	✓			▲	✓					
0-2000	✓			▲						

- Self contained.
- ◆ Complete with attached shunt
- ▲ 75mV – external shunt required
- ✓ Complete with external resistance box.
- * Millivoltmeters can be supplied on request.
- Complete with external transformer.

Terminal resistance – Tolerance ± 15%

Range		Range	
25µA	4200Ω	250µA	360Ω
50µA	2040Ω	500µA	207Ω
100µA	1020Ω	1mA	68Ω
200µA	490Ω		

Accuracy

Type	Scale length	DC	AC Rectifier
22AF	56.0mm/2.20in	±1.5%	±2.5%
32AF	70.0mm/2.76in	±1.5%	±2.5%
42AF	95.0mm/3.74in	±1.0%	±1.5%

Weight

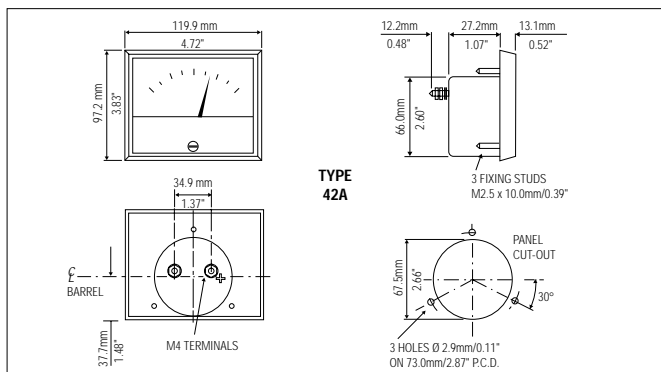
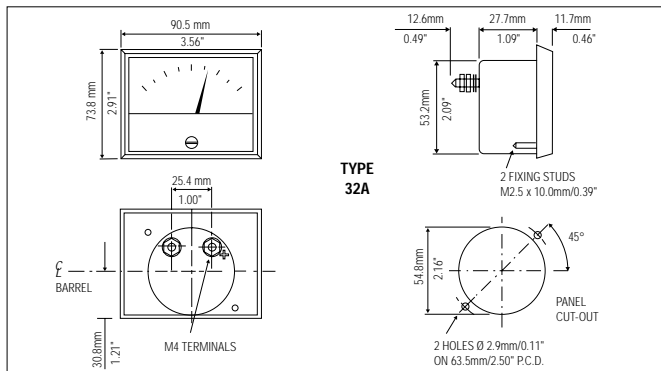
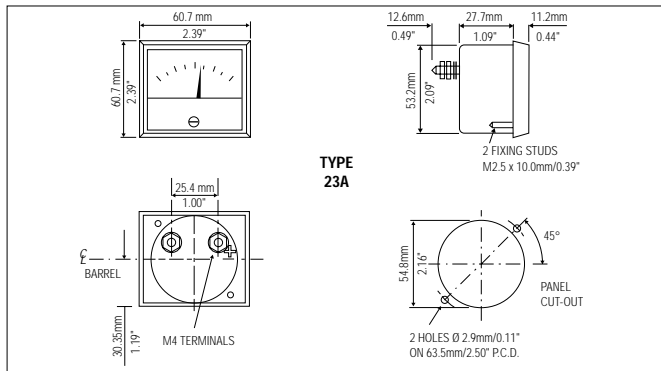
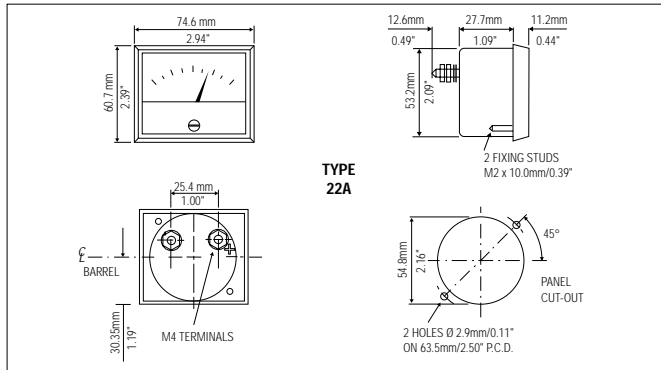
Type	Nett Weight	Type	Nett Weight
22AF	142g/5.0oz	42A	284g/10.0oz
32AF	170g/6.0oz		



SIFAM INSTRUMENTS LIMITED
 WOODLAND ROAD TORQUAY DEVON TQ2 7AY ENGLAND
 TEL: 01803 407733 FAX: 01803 407740
 info@sifam.com www.sifam.com



As part of our policy of continuous product improvement we reserve the right to change specifications at any time.



Standard ranges

If the required range is not indicated by a symbol please enquire as it may be possible to supply to your special requirements

Range	DC				AC				H.F. Thermocouple	
	V	µA	mA	A	V	µA	mA	A	mA	A
0-1	●	●*	■		●		●		●	
0-1.5										
0-2	●			●					●	
0-2.5				●						
0-3	●				●		●		●	
0-5	●	■		●	●		●		●	
0-10	●	■		●	●		●		●	
0-12					●					
0-15					●		●			
0-20	●	■		●	●		●		●	
0-25				●			◆			
0-30	●	■		●	●		◆		●	
0-40	●				●		◆		●	
0-50	●	■		●	●		◆		●	

- Self contained.
- ◆ Complete with attached shunt
- ▲ 75mV – external shunt required
- ✓ Complete with external resistance box.
- * Millivoltmeters can be supplied on request.
- Complete with external transformer.

Terminal resistance – Tolerance ± 15%

		Range	
25µA	4200Ω	250µA	360Ω
50µA	2040Ω	500µA	207Ω
100µA	1020Ω	1mA	68Ω
200µA	490Ω		

Accuracy

Type	Scale length	DC	AC Rectifier
22A	56.0mm/2.20in	±1.5%	±2.5%
23A	50.0mm/2.00in	±1.5%	±2.5%
32A	70.0mm/2.76in	±1.5%	±2.5%
42A	95.0mm/3.74in	±1.0%	±1.5%

Weight

Type	Nett Weight	Type	Nett Weight
22A	142g/5.0oz	32A	170g/6.0oz
23A	114g/4.0oz	42A	340g/12.0oz



SIFAM INSTRUMENTS LIMITED
 WOODLAND ROAD TORQUAY DEVON TQ2 7AY ENGLAND
 TEL: 01803 407733 FAX: 01803 407740
 info@sifam.com www.sifam.com



As part of our policy of continuous product improvement we reserve the right to change specifications at any time.



Key features

- ◆ Innovative design
- ◆ Only 3mm bezel stand off for near flush fit appearance
- ◆ Very easy installation
- ◆ Taut band movements



Meter as seen when mounted

Monitor

Meter types 28, 38, 48, 58

The Monitor is a traditionally styled range of analogue moving coil instruments, which are available in four sizes, uniquely constructed and styled to provide a slim landscape appearance.

Features and benefits

- ◆ Innovative design – the meter casing and movement are contained behind the panel, allowing the meter display fascia to be considerably slimmer than comparable meters of this type.
- ◆ Robust phenolic bezel finished in matt black and fitted with a glass window providing a clean, uncluttered appearance. Provides an almost flush fitting appearance – bezel stand off only 3mm.
- ◆ Simple to fit front mounting secured by two captive swivel screw clamps from the rear. Suitable for panel thickness of up to 4mm.
- ◆ Rear body case moulding manufactured from glass filled nylon (Types 48 & 58 glass filled polycarbonate).
- ◆ All Monitor meters incorporate taut band movements.

Pointers and dials

Pointers and dial markings are normally in accordance with current BS 3693 requirements. Other types of pointer and/or custom dial marking together with company logos, including colour printing, can be provided to suit individual requirements. Centre or right-hand zero scales are also available. Mirror dials can be supplied.

Accuracy

All SIFAM meters are normally supplied to meet the requirements of current BS89, IEC 51, EN60 051 and ANSI C39.1 standards.

Zero adjuster

Normally positioned on the front but can be specified on the rear.

Certified drawings

Available on request.

Operating temperature range

-40°C to +70°C

PPM Indicators and vu Meters

Certain types of Monitor meters are available to the relevant specifications. Please refer to SIFAM for specific information.

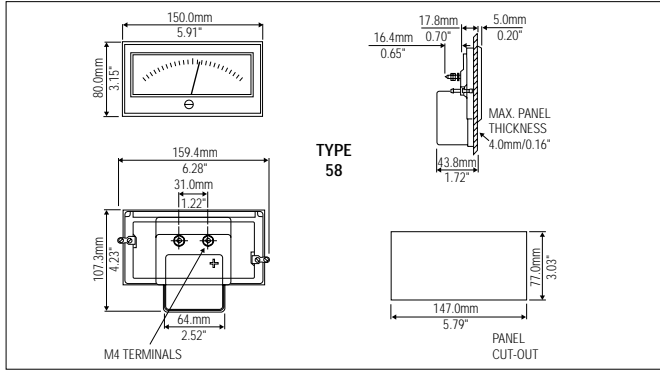
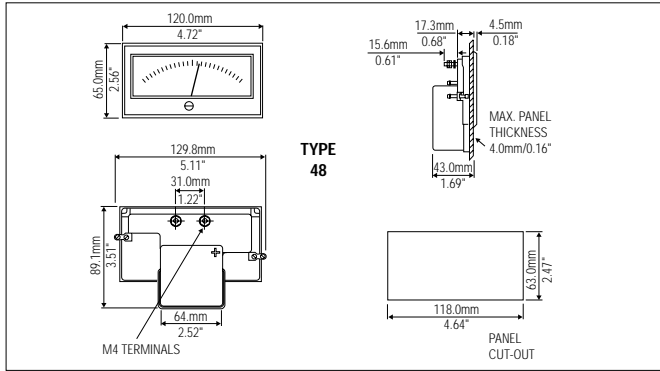
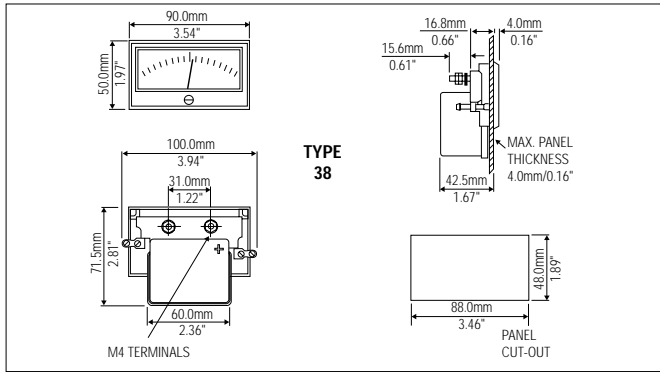
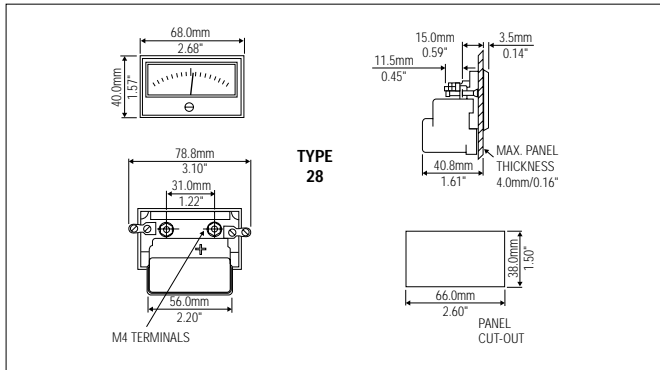
Illumination

This can be provided from the rear when required. Please refer to SIFAM for specific information.

Ordering information

To order, simply refer to the SIFAM Meter User Guide or contact the sales office.

Monitor



Standard ranges

If the required range is not indicated by a symbol please enquire as it may be possible to supply to your special requirements

Range	DC				AC				H.F. Thermocouple	
	V	µA	mA	A	V	µA	mA	A	mA	A
0-1	●*		●	●	●		●	■		●
0-1.5										
0-2	●				●					●
0-2.5										●
0-3	●		●	●	●					■
0-5	●		●	●	●		●	■	●	■
0-10	●	●	●	●	●		●	■	●	■
0-12										■
0-15			●	●						■
0-20	●	●	●	●	●		●	■		■
0-25		●		◆						●
0-30	●		●	◆	●		●	■		
0-40	●		●	◆	●		●	■		
0-50	●	●	●	▲	●	●	●	■	●	
0-100	●	●	●	▲	●	●	●	■	●	
0-120	●		●		●					
0-150	●		●		●			■		
0-200	●	●	●	▲	●		■		●	
0-250	●	●	●	▲	●	●				
0-300	●		●	▲	●					
0-400	●		●	▲	●					
0-500	●	●	●	▲	●	●	■		●	
0-1000	✓			▲	✓					
0-1500	✓			▲	✓					
0-2000	✓			▲						

- Self contained.
- ◆ Complete with attached shunt (except type 28)
- ▲ 75mV – external shunt required
- ✓ Complete with external resistance box.
- * Millivoltmeters can be supplied on request.
- Complete with external thermocouple (type 28 from 2mA)

Terminal resistance – Tolerance ± 15%

Range		Range	
25µA	4200Ω	250µA	360Ω
50µA	2040Ω	500µA	207Ω
100µA	1020Ω	1mA	68Ω
200µA	490Ω		

Accuracy

Type	Scale length	DC	AC Rectifier
28	50.0mm/1.97in	±1.5%	±2.5%
38	70.0mm/2.76in	±1.5%	±2.5%
48	95.0mm/3.74in	±1.0%	±1.5%
58	120.0mm/4.72in	±1.0%	±1.5%

Weight

Type	Nett Weight	Type	Nett Weight
28	130g/4.5oz	48	284g/10.0oz
38	185g/6.5oz	58	340g/12.0oz



SIFAM INSTRUMENTS LIMITED
 WOODLAND ROAD TORQUAY DEVON TQ2 7AY ENGLAND
 TEL: 01803 407733 FAX: 01803 407740
 info@sifam.com www.sifam.com



As part of our policy of continuous product improvement we reserve the right to change specifications at any time.



SIFAM
COMPONENTS DIVISION



Key features

- ◆ Flexible styling – 4 sizes each in four styles
- ◆ High quality modular construction
- ◆ Taut band core magnet movements

Presentor

Meter types 19, 29, 39, 49

The Presentor range of analogue moving coil instruments is available in four sizes each in four styles. The modern flexible styling meets today's stringent design and economic requirements.

Features and benefits

- ◆ Choice of four styles available in each size
 - Simple back of panel mounting
 - Back of panel mounting with accompanying bezel
 - Front of panel mounting with lower mask
 - Front of panel mounting with full bezel
- ◆ Constructed with transparent acrylic front and high impact translucent rear body moulding. Masks and bezels, available in black or grey, are moulded in ABS.
- ◆ Taut band core magnet movement incorporated as standard within a compact 26mm diameter barrel. There is no calibration effect when mounted on a ferrous panel

Pointers and dials

Pointers and dial markings are normally in accordance with the current BS3693 requirements. Other types of pointer and/or custom dial markings together with company logos, including colour printing can be provided to suit individual requirements. Centre or right-hand zero scales are available if required. Mirror dials can be supplied (except for type 19).

Accuracy

All SIFAM meters are normally supplied/designed to meet the requirements of current BS89, IEC 51, EN60 051 and ANSI C39.1 standards.

Calibration

For vertical use unless otherwise specified.

Zero adjuster

Normally positioned on the front of surface mounted styles and on the rear of behind panel styles. Reverse options to these may be specified.

Certified drawings

Available on request.

Operating Temperature

-25°C to +55°C.

Audio level indicators

All of the Presentor meters are available in this version (except type 49). Please refer to SIFAM for specific information.

Illumination

Comprehensive options are available. Please refer to back page for more information.

Terminals

6mm tabs are supplied as standard but threaded studs or flying leads are available. Please refer to back page for more information.

Presentor

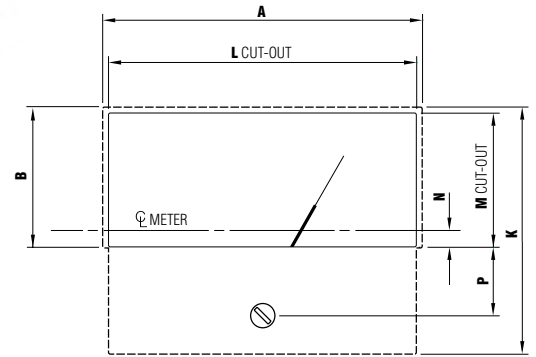
Presentor

Presentor Style W

For back of panel mounting with only the scale and pointer visible.

Types: **19W, 29W, 39W, 49W**

Meter barrel cut out 27.0mm/1.06"
Fixing studs M2.5x10.0mm/0.39"
(except type 19: M2)



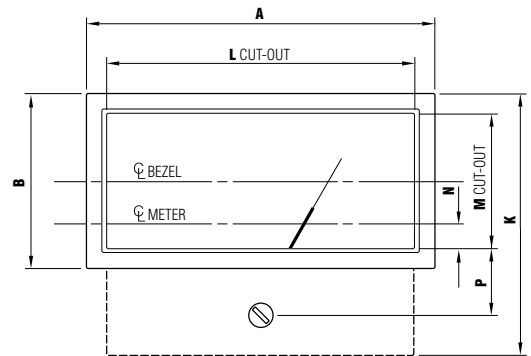
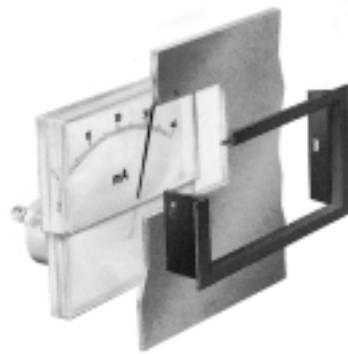
6.00mm/0.24" hole required when optional front zero is specified

Presentor Style WF

For back of panel mounting with bezel and with only the scale and pointer visible.

Types: **19WF, 29WF, 39WF, 49WF**

Max panel thickness 4.0mm/0.16"
(except type 19: 3.0mm/0.12")
Meter barrel cut out 27.0mm/1.06"
Fixing studs M2.5x10.0mm/0.39"
(except type 19: M2)



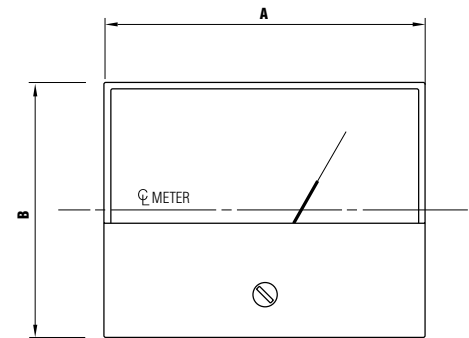
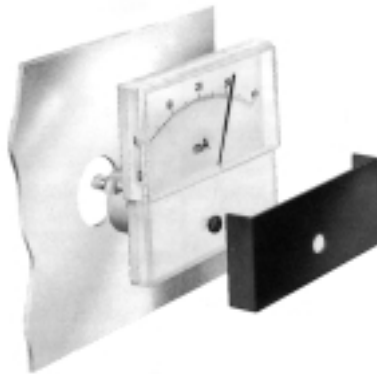
6.00mm/0.24" hole required when optional front zero is specified

Presentor Style M

For front of panel mounting with lower mask.

Types: **19M, 29M, 39M, 49M**

Max panel thickness 6.0mm/0.24"
Meter barrel cut out 27.0mm/1.06"
Fixing studs M2.5x10.0mm/0.39"
(except type 19: M2)

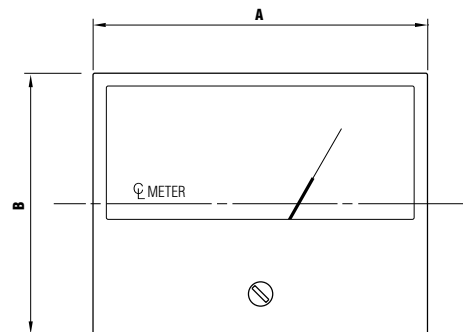


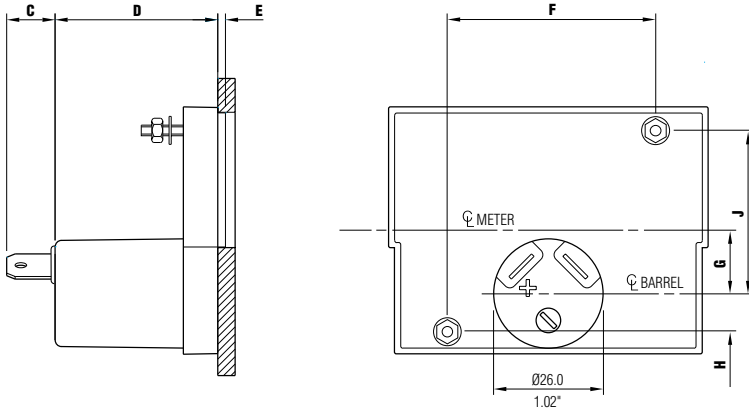
Presentor Style B

For front of panel mounting with full bezel.

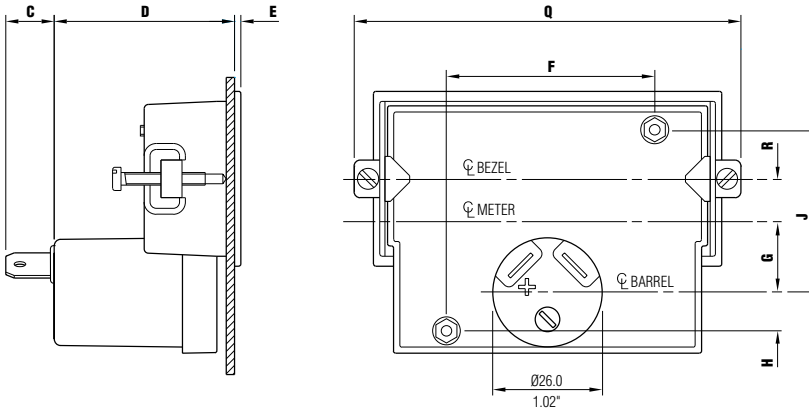
Types: **19B, 29B, 39B, 49B**

Max panel thickness 6.0mm/0.24"
Meter barrel cut out 27.0mm/1.06"
Fixing studs M2.5x10.0mm/0.39"
(except type 19: M2)

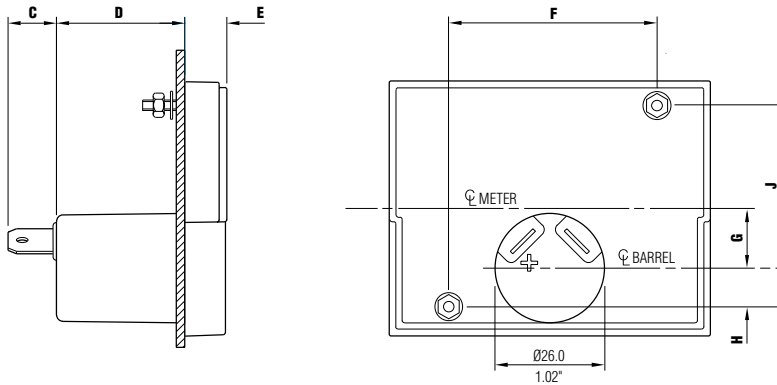




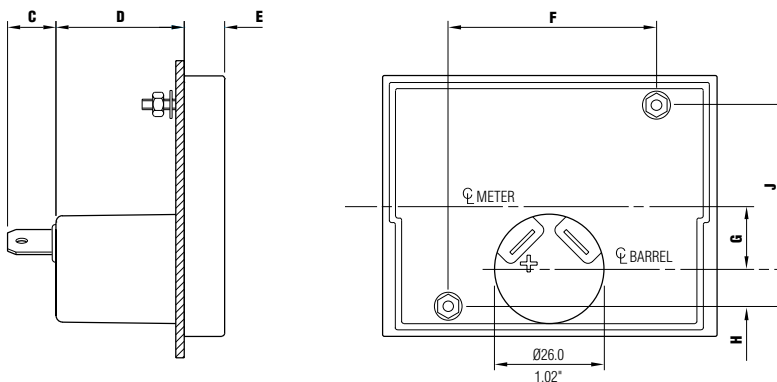
	19W		29W		39W		49W	
	mm	inches	mm	inches	mm	inches	mm	inches
A	43.9	1.73	76.1	2.99	94.0	3.70	124.0	4.88
B	21.0	0.82	33.3	1.31	41.9	1.65	57.1	2.25
C	11.5	0.45	11.5	0.45	11.5	0.45	11.5	0.45
D	37.2	1.46	38.7	1.52	39.2	1.54	40.3	1.59
E	1.50	0.06	1.80	0.07	2.00	0.08	2.10	0.08
F	32.0	1.26	47.8	1.88	57.2	2.25	92.0	3.62
G	4.70	0.18	15.0	0.59	20.9	0.82	26.9	1.06
H	Fixing studs in same horizontal plane above C/L 7.0mm/0.28"		9.70	0.38	8.60	0.34	Fixing studs in same horizontal plane above C/L 7.0mm/0.28"	
J			38.0	1.50	48.5	1.91		
K	37.9	1.49	58.8	2.32	72.4	2.85	93.0	3.66
L	42.4	1.66	73.66	2.90	91.50	3.60	121.00	4.76
M	20.20	0.79	32.26	1.27	40.50	1.59	55.50	2.19
N	2.0	0.08	3.90	0.15	5.70	0.22	10.6	0.42
P	9.90	0.39	16.1	0.63	20.4	0.80	21.5	0.85



	19WF		29WF		39WF		49WF	
	mm	inches	mm	inches	mm	inches	mm	inches
A	49.2	1.94	82.8	3.26	101.0	3.98	131.0	5.16
B	27.0	1.06	41.6	1.64	50.5	1.99	65.6	2.58
C	11.5	0.45	11.5	0.45	11.5	0.45	11.5	0.45
D	40.8	1.61	42.9	1.69	43.4	1.71	44.5	1.75
E	1.50	0.06	1.50	0.06	1.6	0.06	1.70	0.07
F	32.0	1.26	47.8	1.88	57.2	2.25	92.0	3.62
G	6.10	0.24	16.7	0.66	22.7	0.89	28.7	1.13
H	Fixing studs in same horizontal plane above C/L 7.0mm/0.28"		9.70	0.38	8.60	0.34	Fixing studs in same horizontal plane above C/L 7.0mm/0.28"	
J			38.0	1.50	48.5	1.91		
K	40.6	1.60	62.2	2.45	76.1	2.99	96.5	3.80
L	47.0	1.85	80.0	3.15	98.0	3.86	128.0	5.04
M	24.0	0.94	37.0	1.46	46.0	1.81	61.0	2.40
N	5.20	0.20	8.10	0.32	10.2	0.40	15.1	0.59
P	8.00	0.31	13.7	0.54	17.7	0.70	18.8	0.74
Q	58.5	2.30	90.6	3.57	108.6	4.28	139.7	5.50
R	6.80	0.27	10.3	0.41	12.8	0.50	15.4	0.61



	19M		29M		39M		49M	
	mm	inches	mm	inches	mm	inches	mm	inches
A	43.9	1.73	76.1	2.99	94.0	3.70	124.0	4.88
B	38.8	1.53	60.3	2.37	74.0	2.91	94.6	3.72
C	11.5	0.45	11.5	0.45	11.5	0.45	11.5	0.45
D	31.2	1.23	30.5	1.20	30.2	1.19	30.2	1.19
E	7.50	0.30	10.0	0.39	11.0	0.43	12.2	0.48
F	32.0	1.26	47.8	1.88	57.2	2.25	92.0	3.62
G	4.20	0.17	14.2	0.56	20.0	0.79	26.1	1.03
H	Fixing studs in same horizontal plane above C/L 7.0mm/0.28"		9.70	0.38	8.60	0.34	Fixing studs in same horizontal plane above C/L 7.0mm/0.28"	
J			38.0	1.50	48.5	1.91		



	19B		29B		39B		49B	
	mm	inches	mm	inches	mm	inches	mm	inches
A	46.0	1.81	79.5	3.13	97.5	3.84	127.7	5.03
B	40.0	1.57	61.9	2.44	76.4	3.01	96.6	3.80
C	11.5	0.45	11.5	0.45	11.5	0.45	11.5	0.45
D	31.2	1.23	30.5	1.20	30.2	1.19	30.2	1.19
E	7.50	0.30	10.0	0.39	11.0	0.43	12.2	0.48
F	32.0	1.26	47.8	1.88	57.2	2.25	92.0	3.62
G	4.8	0.19	15.0	0.59	20.8	0.82	26.9	1.06
H	Fixing studs in same horizontal plane above C/L 7.0mm/0.28"		9.70	0.38	8.60	0.34	Fixing studs in same horizontal plane above C/L 7.0mm/0.28"	
J			38.0	1.50	48.5	1.91		

Presenter

Terminals

Bent tabs option

Screw terminals option
All types/styles M2.5 terminals

Flying leads option

Also available with reduced barrel depth - special order only

Type	Barrel Depth
19	29.2mm/1.15"
29	28.5mm/1.12"
39	28.2mm/1.11"
49	28.3mm/1.11"

Illumination

This is available in either of the two forms shown below and should be specified at the time of ordering meters.
Please contact the sales office for full information and drawings.

Overhead
Available for types 19W, 19WF, 29W, 29WF, 39W, 39WF
Unit contains Ø6mm festoon style lamp available in 6V, 12V, or 24V

Light Box
Available for all styles of types 29, 39 which require translucent dials. The meter fixing studs occupy different positions and rectangular panel cut-outs are required for styles M, B.

Unit is available with either festoon style or T1 3/4 flanged lamps in 6V, 12V, 24V. T1 3/4 flanged LEDs are also available in either 12V or 24V.

Standard ranges

If the required range is not indicated by a symbol please enquire as it may be possible to supply to your special requirements

Range	DC				AC			
	V	µA	mA	A	V	µA	mA	A
0-1	●*		●	●	●		●	■
0-1.5								
0-2	●			●	●			
0-2.5				◆				
0-3	●		●	◆	●			
0-5	●		●	◆	●		●	■
0-10	●		●	◆	●		●	■
0-12								
0-15			●					
0-20	●		●	▲	●		●	■
0-25				▲				
0-30	●		●	▲	●		●	■
0-40	●		●	▲	●		●	
0-50	●	●	●	▲	●	●	●	■
0-100	●	●	●	▲	●	●	●	■
0-120	●		●		●			
0-150	●		●		●			■
0-200	●	●	●	▲	●	●	■	
0-250	●	●	●	▲	●	●		
0-300				▲				
0-400			●					
0-500		●	●	▲		●	■	
0-1000	✓			▲	✓			
0-1500	✓			▲	✓			
0-2000	✓			▲				

- Self contained.
- ◆ Complete with external tag board.
- ▲ 75mV - external shunt required.
- ✓ Complete with external resistance box.
- * Millivoltmeters can be supplied on request.
- Complete with external transformer.

Terminal resistance

Range	Tolerance ± 15%	Range	Tolerance ± 15%
50µA	2000Ω	250µA	255Ω
100µA	1000Ω	500µA	155Ω
200µA	365Ω	1mA	50Ω

Accuracy

Type	Scale length	DC	AC Rectifier
19	34.0mm/1.34"	±2.5%	±2.5%
29	60.0mm/2.36"	±1.5%	±2.5%
39	78.0mm/3.07"	±1.5%	±2.5%
49	100.0mm/3.94"	±1.5%	±1.5%

Weight

Type	Nett Weight	Type	Nett Weight
19	40g/1.4oz	39	90g/2.8oz
29	65g/2.3oz	49	130g/4.6oz

As part of our policy of continuous product improvement we reserve the right to change specifications at any time.



SIFAM
COMPONENTS DIVISION

SIFAM LIMITED
WOODLAND ROAD TORQUAY DEVON
TQ2 7AY ENGLAND
TEL: 01803 407733 FAX: 01803 407740
Sifam_ComponentsUK@compuserve.com
www.sifam.com

SIFAM - The plastics and measurement technology group



Certificate No. 851037

As part of our policy of continuous product improvement we reserve the right to change specifications at any time.